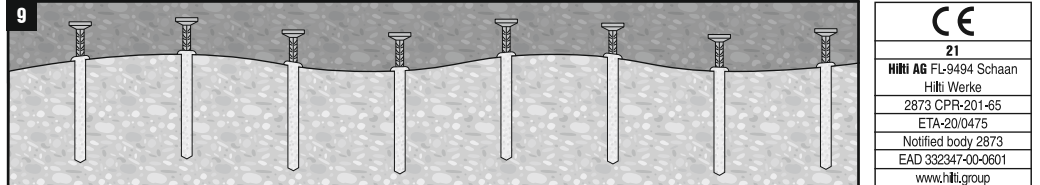
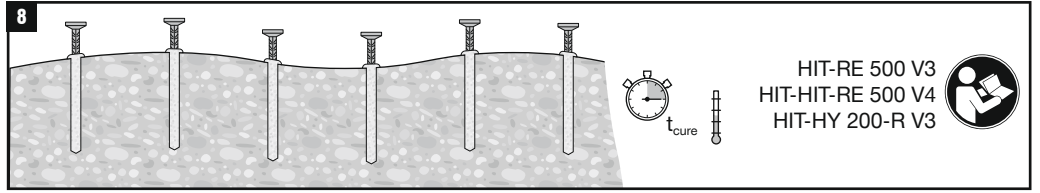
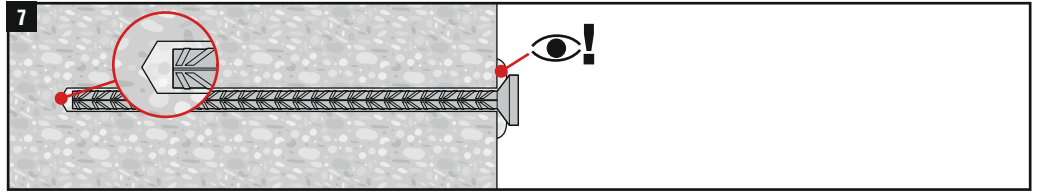
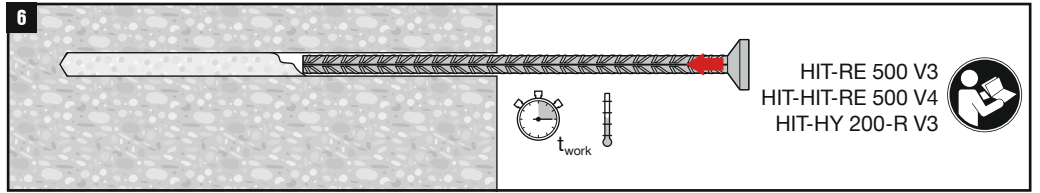
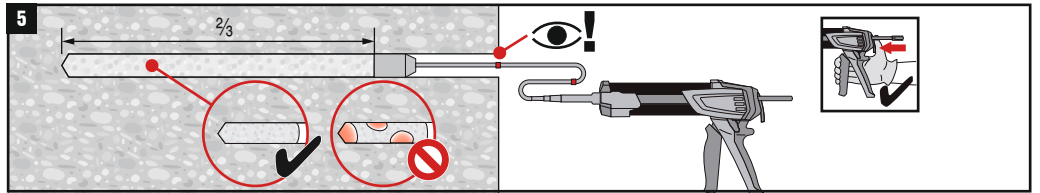
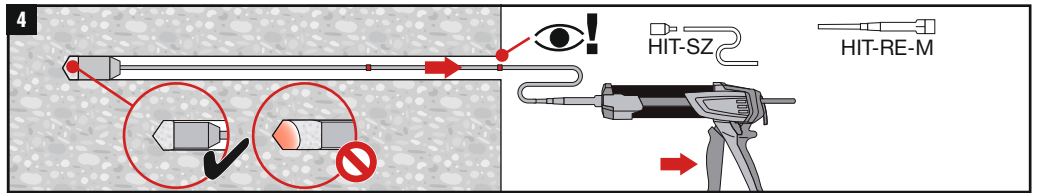
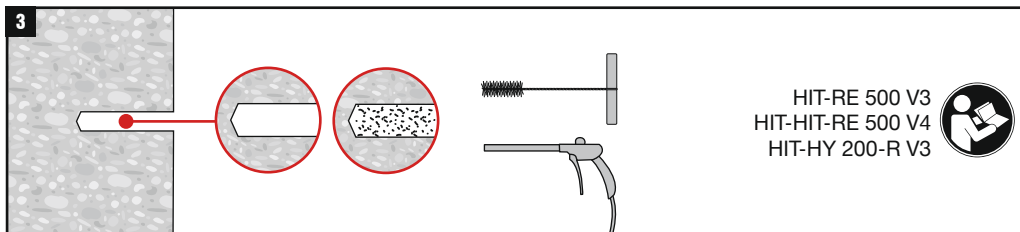
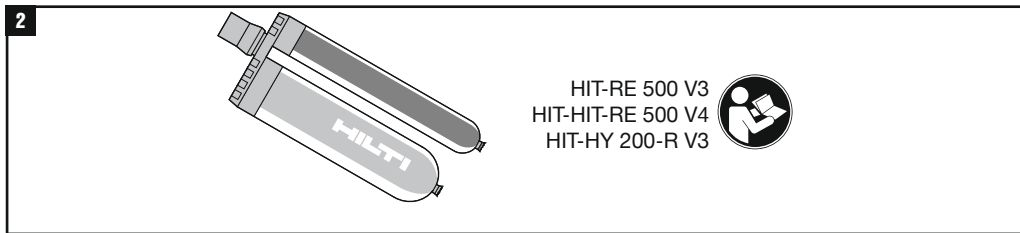


1.1		d_0	h_{ef}
		Ø 14 mm	65 ... 205 mm
		Ø 16 mm	80 ... 245 mm
		Ø 18 mm	90 ... 285 mm
		Ø 20 mm	100 ... 325 mm

1.2			
		✓	✓
		✓	✓
		✓	✗



CE
 21
 Hilti AG FL-9494 Schaan
 Hilti Werke
 2873 CPR-201-65
 ETA-20/0475
 Notified body 2873
 EAD 332347-00-0601
 www.hilti.group